

OUR MISSION

Sacred Heart is growing – and our church needs a home that reflects the strength of our faith and the needs of our future.

“Unless the Lord builds the house...” Psalm 127:1



**COMMENCEMENT MEETING
NEW CHURCH BUILDING**

*Living Hope and Joy in the Sacred Heart of
Jesus*

Team Introduction

Capital Campaign Committee

- **Rev. Christopher Jarvis,
Pastor**
- **Ed Boettcher, Chair**
- **Jeff Clark**
- **Jamie Hresko**
- **Bob Streit**

**Responsible for the
development and
implementation of
fundraising strategy.**



Team Introduction

Building Committee

- **Rev. Christopher Jarvis, Pastor**
- **Jamie Hresko, Chair**
- **Jerry Tomczak, General Contractor**
- **Ray Kendra, Architect**
- **Brad Muma, Engineer**
- **George Seifried**
- **Jeff Clark**
- **Wes Moulton**

Responsible for the development and implementation of building plan.



Project Oversight

- **Bishop – All plans reviewed by diocesan commissions and committees and approved by Bishop Walsh**
 - **Diocesan Architectural Committee**
 - **Diocesan Finance Committee**
 - **Diocesan College of Consultors**
- **Triple review and approval process for all expenditures. Invoices reviewed by the General Contractor and two building committee members**
- **Building design, finishes, furnishings, etc. discussed in committee to reach collaborative agreement**





Financial Review

- **Total Amount Fundraised To Date:**
 - **\$6,725,000**
- **Cash Collected To Date:**
 - **\$4,785,000**
- **Remaining Pledges outstanding:**
 - **\$1,940,000**



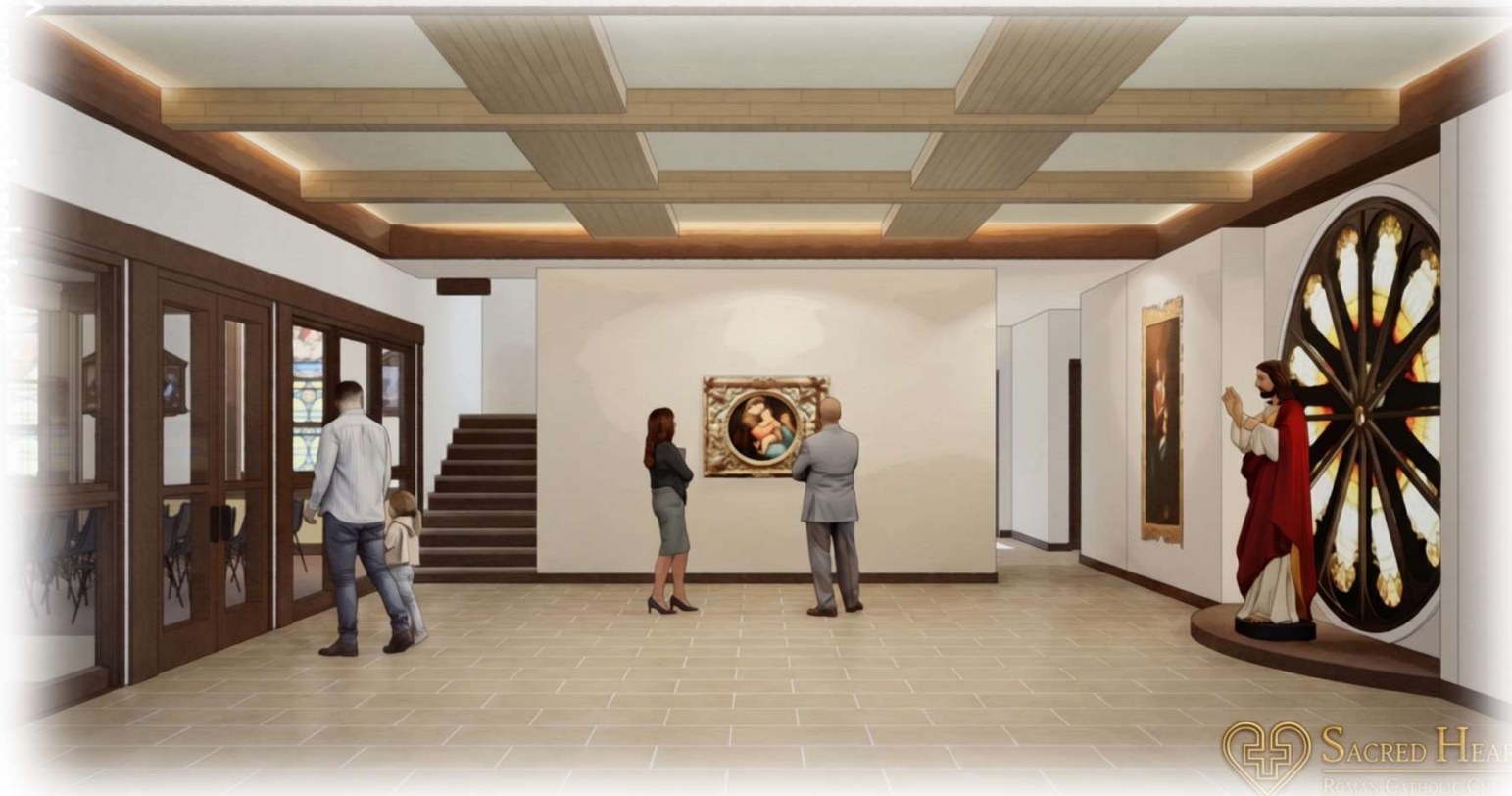
Financial Review

- **Construction Estimate: \$6,614,750. This includes:**
 - **Construction of the building**
 - **Renovation of northern Community Room (new Narthex)**
 - **Interior and Exterior Finishes of the building**
 - **Mechanical/Electrical/HVAC Systems**
 - **Grounds Preparation / New Parking**
 - **Demolition of the old church**
 - **Third-Party costs: audit, engineering, etc**
 - **Interest on construction loan**



Financial Review

- **Construction estimate of \$6,486,750 does NOT include:**
 - **Liturgical / Devotional Art**
 - **Statues, paintings, etc.**
 - **Liturgical Accoutrement**
 - **Altar Items, etc.**
 - **Liturgical Furnishings**
 - **Baptistry, Clergy and Servers' Chairs, etc.**



Loan Structure

- **Loan from the Diocese of Gaylord to cover pledges not yet received**
- **Approved for loan up to \$1,750,000**
- **Loan term is 5 years**
 - **Sacred Heart will pay approximately \$87,000 in interest on the loan if paid over the full five-year period**



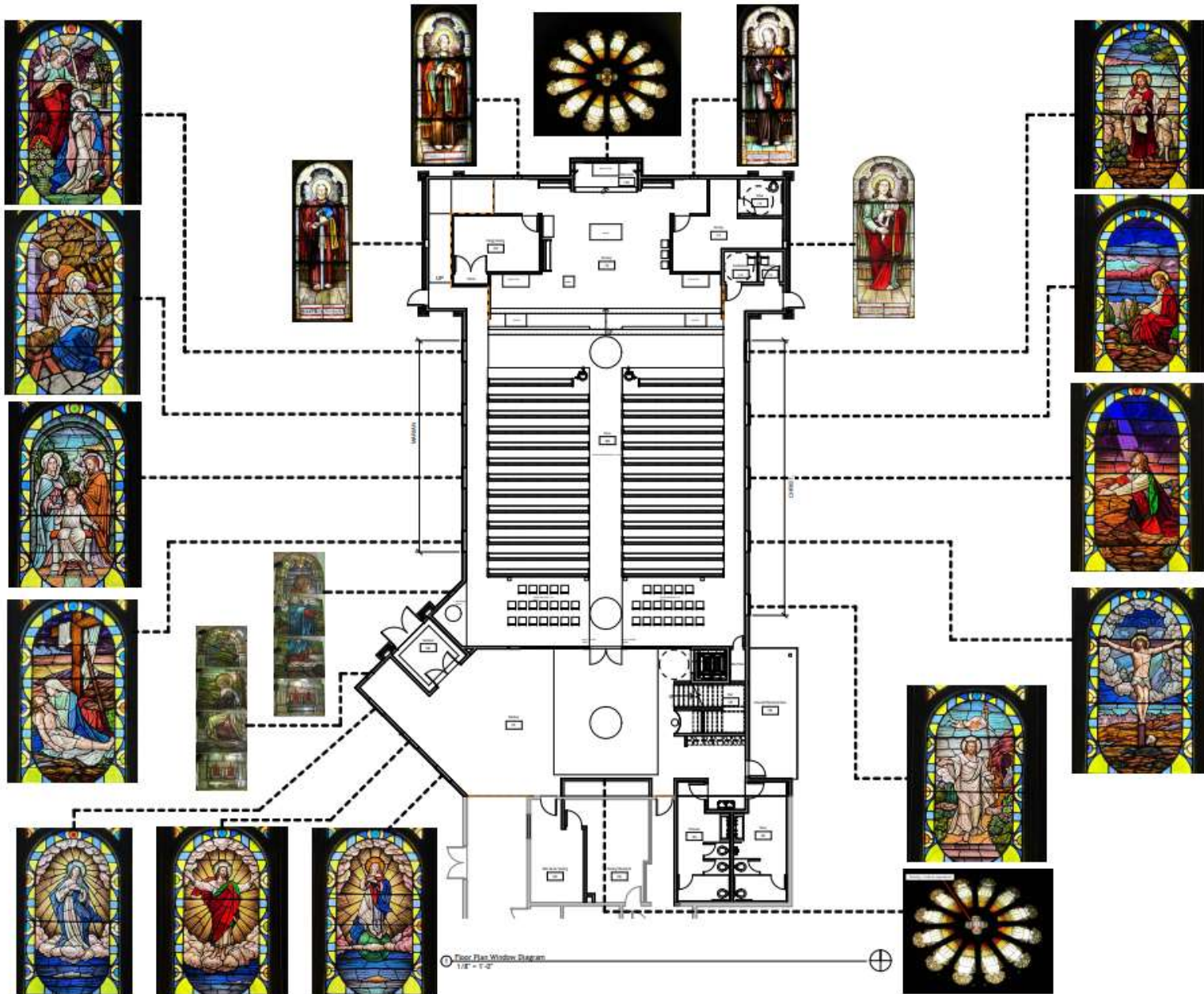
Loan Utilization

- **Cash on-hand will be spent first, to reduce interest charged on loan**
- **Draws will be made on loan only as needed, to reduce interest charges**
- **At conclusion of building process, the debt principal will be paid down as quickly as possible, as pledges are received, to reduce interest paid**
- **The parish will be updated on the status of the loan in the bulletin**



Cost-Reduction

- **Windows – St. Ladislaus**
- **High Altar – from closed Catholic Church in Kansas City**
- **Altar of Sacrifice – St. Joseph in Leicester, MA**
- **Pews – St. Ladislaus**
- **Lighting – Current Church**
- **Stations – St. Joseph in Leicester, MA**
- **Baptismal Font – St. Pius X in Leicester, MA**



Floor Plan Window Diagram
1/8" = 1'-0"

ISSUES

ISSUE	ISSUE DATE

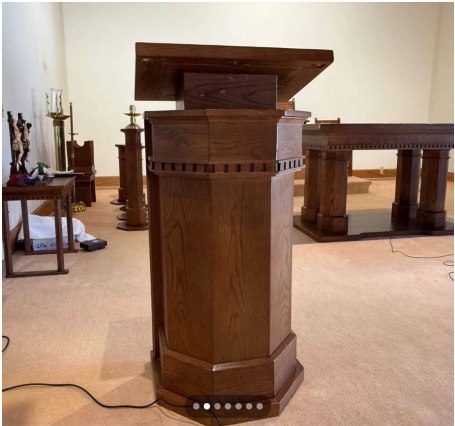
CURRENT REVISION DATE
01/10/2025 4:20:03 PM

PRELIMINARY//NOT FOR CONSTRUCTION

environmentarchitects

Sacred Heart Elk Rapids
Project Number: 24-19
143 Charles Street, Elk Rapids, MI 49629

Window Diagram	
CALL: 261-946-1234 10001 S. Cherry Road SE TUMACACI CITY, MI 49684 ENV.ARCH.COM	A3.0



Cost-Reduction Opportunities

- **Parishioners pay off pledges early, reducing amount of interest paid on loan.**
- **Further donations to reduce loan amount**
- **Volunteer opportunities**
 - **Landscaping**
- **Named Donation Opportunities**
 - **Bell Tower**
 - **Bell**
 - **Windows**
 - **Gardens**
 - **Naming Wall**





Future Financial Plans

- **Plans are ongoing to invest any funds exceeding the final cost of the project in an endowment to be used for building maintenance and repairs, program costs, and further campus development**



Project Timeline

- **Groundbreaking ceremony next Sunday, May 3rd at 10:30AM**
- **Construction begins in early May, 2026**
- **Projected completion date in Summer, 2027**
- **Current church will be demolished after completion of new church**

Construction Awareness

- **Please pay attention to barriers and signs erected by the construction team. These will change throughout the construction process**
 - **Your safety is the most important thing. Please do not enter construction zones**
- **Construction Noise**
 - **There will be construction noise during weekday meetings, Masses, and services**
 - **There will be a construction “quiet time” observed during funerals and weddings**
- **Construction Inconveniences**
 - **There will be minor inconveniences caused by construction. It’s part of the growing process**
 - **The construction crews are guests on our campus. Let us practice Sacred Heart hospitality at its finest**



Construction “Safe Zones”

- **The Parish Life Building from the choir room south will generally be unaffected. Parish business and events will proceed normally in these spaces**
- **The current church will be fully functional during construction**
 - **The front door will be accessible at all times**
 - **The front ramp will be accessible at all times**
 - **The southside door and ramp will not be accessible at all times**
- **The southwest lawn will be available for kids’ play**
- **The north lawn will not be accessible**
- **The grassy area east of the Parish Hall will not always be available**



Parking

- **The most significant change in day-to-day parish life will be parking**
- **The parking lot south of the Parish Hall will remain available**
- **The parking lot west of the office doors will remain available**
- **The north parking lot will be closed during construction**
- **The parking lot of the elementary school is available for our use on weekends and during parish events**
- **Parking will not be available between the church and the rectory**



Parking Continued

- **If you and your family are able, please consider parking in the school parking lot to save parking spots nearer the church for older people and individuals with disabilities**
- **Please try to avoid parking in front of the church on Charles Street, to allow for a drop-off and pick-up spot for the elderly and individuals with disabilities**
- **Practice patience during this period. Assist one another when possible**
- **Help Sacred Heart be a good neighbor. If you park on the streets, please do not block driveways or mailboxes**



Architect Review

**Ray Kendra,
Architect;
Environment
Architects of
Traverse City**



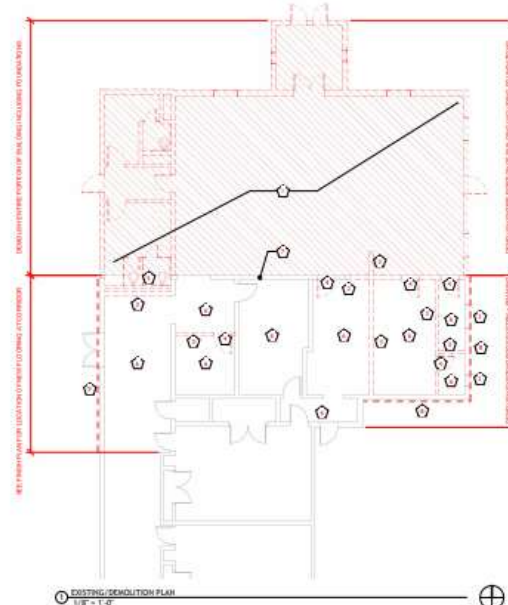
Architect Review

DEMO NOTES - 02.1	
Number	Text
1	REMOVE ALL CONSTRUCTION IN THIS AREA. COORDINATE WITH NEW WORK.
2	SEE REMOVAL BY THIS SECTION.
3	REMOVE WALL AS INDICATED. PATCH UP AND REPAIR AS REQUIRED. COORD. WITH NEW WORK.
4	REMOVE FLOOR AND TRIM AS INDICATED. PATCH AND REPAIR AS REQUIRED. COORD. WITH NEW WORK.
5	REMOVE EXISTING FLOORING PER AREA. PATCH AND REPAIR AS PER REQUIREMENTS.
6	REMOVE EXISTING FLOOR TRIM AND PATCH AS NEW FLOOR.
7	REMOVE LOW WALL TO REAR. REPAIR EXISTING CONCRETE BELOW BRIDGE AND HOOPY ARCHITECT - STRUCTURAL ANSWER.
8	REMOVE EXISTING TRIM, AND PREP FOR NEW TRIM TO MATCH NEW ARCHITECT.
9	REMOVE PORTION OF EXISTING WOOD FROM REAR CORNER TO EDGE OF EXISTING BRIDGE. EXISTING WOOD TO REMAIN FROM BRIDGE. COORDINATE WITH NEW BRIDGE CONNECTION TO EXISTING BRIDGE.

NOTE:
 ALL DEMO WORK TO BE COORDINATED WITH ARCHITECTURAL, STRUCTURAL, AND A/E/P REQUIREMENTS.
 SEE A/E/P FOR ALL REQUIRED DEMO REQUIREMENTS AND OBTAIN ALL PERMITS NEEDED TO CONNECT TO NEW ARCHITECT.
 SEE STRUCTURAL FOR ALL REQUIRED DEMO REQUIREMENTS AND OBTAIN ALL PERMITS NEEDED TO CONNECT TO NEW ARCHITECT.



DEMO NOTE 9 - REFERENCE IMAGE

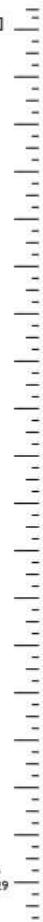


DATE PLOTTED: 3/22/2024 10:30:24 AM

environmentarchitects

Sacred Heart Elk Rapids
 Project Number: 24-19
 143 Charles Street,
 Elk Rapids, MI 49629

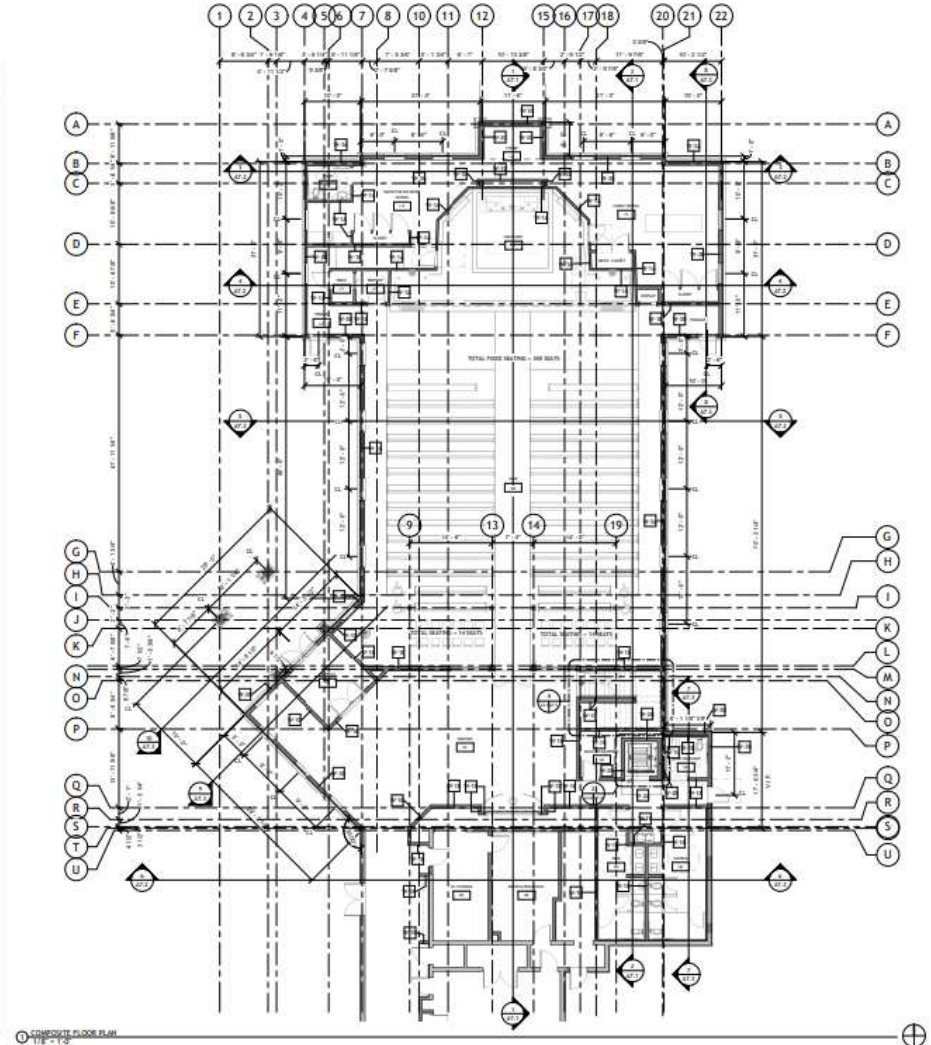
DEMO AND PROJECT AREA PLAN	
CALL 224.968.1294 6301 S. Cherry Street TRAVERSE CITY, MI 49684 ENVARCH.COM	D2.0



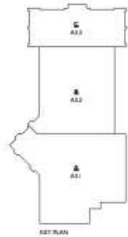
Architect Review

WALL TYPE LEGEND

W-1		3/4" GYP. BOARD & EACH FACE 2X4 WOOD STUD FRAMING @ 16" O.C. W/ 1/2" SOLAR BATT INSULATION @ DISCREGATED AREA, TOP
W-2		3/4" GYP. BOARD & EACH FACE 2X4 WOOD STUD FRAMING @ 16" O.C. W/ 1/2" SOLAR BATT INSULATION @ DISCREGATED AREA, TOP
W-3		2X4 WOOD STUD FRAMING @ 16" O.C. W/ SOLAR BATT INSULATION @ DISCREGATED AREA, TOP 3/4" GYP. BOARD @ SINGLE FACE
W-4		2X4 WOOD STUD FRAMING @ 16" O.C. W/ SOLAR BATT INSULATION @ DISCREGATED AREA, TOP 3/4" GYP. BOARD @ SINGLE FACE
W-5		3/4" GYP. BOARD & EACH FACE 2X4 WOOD STUD FRAMING @ 16" O.C. W/ SOLAR BATT INSULATION @ DISCREGATED AREA, TOP
W-6		3/4" GYP. BOARD & EACH FACE 2X4 WOOD STUD FRAMING @ 16" O.C. W/ SOLAR BATT INSULATION @ DISCREGATED AREA, TOP
W-7		3/4" GYP. BOARD & EACH FACE 2X4 WOOD STUD FRAMING @ 16" O.C. W/ SOLAR BATT INSULATION @ DISCREGATED AREA, TOP
W-8		8" CMU BLOCK
W-9		8" CMU BLOCK
W-10		2X4 WOOD STUD FRAMING @ 16" O.C. W/ SOLAR BATT INSULATION @ DISCREGATED AREA, TOP 3/4" GYP. BOARD, NETEL ALTERNATE FOR B LATHER FOR ACoustICAL PERFORMANCE HEIGHTENED CURBET BOARD @ 1/2" EXPOSURE ON COMMERCIAL BUILDING NEWSPAPER BARBER, TOP 1 1/2" GYP. PANEL INSULATION SYSTEM (R=4.0)
W-11		2X4 WOOD STUD FRAMING @ 16" O.C. W/ SOLAR BATT INSULATION @ DISCREGATED AREA, TOP 3/4" GYP. BOARD
W-12		4" INSULATED BRICK TOWER WITH 1/2" AIRSPACE OVER COMMERCIAL BUILDING 1 1/2" GYP. PANEL INSULATION SYSTEM (R=4.0) 2X4 WOOD STUD FRAMING @ 16" O.C. W/ SOLAR BATT INSULATION @ DISCREGATED AREA, TOP 3/4" GYP. BOARD
W-13		12" REINFORCED CONCRETE WALL 1 1/2" WOOD INSULATION @ EXTERIOR LBS DAMP PROOFING
W-14		12" REINFORCED CONCRETE WALL 1 1/2" WOOD INSULATION @ EXTERIOR LBS DAMP PROOFING



ISSUES ISSUE DATE
Construction Documents 05-20



Sacred Heart Elk Rapids
Project Number: 24-19
143 Charles Street, Elk Rapids, MI 49629

environmentalarchitects

COMPOSITE FLOOR PLAN

CALL 261.946.1241
1001 E. Cherry Street SE
TAMPA, FL 33611
WWW.ENVARCH.COM

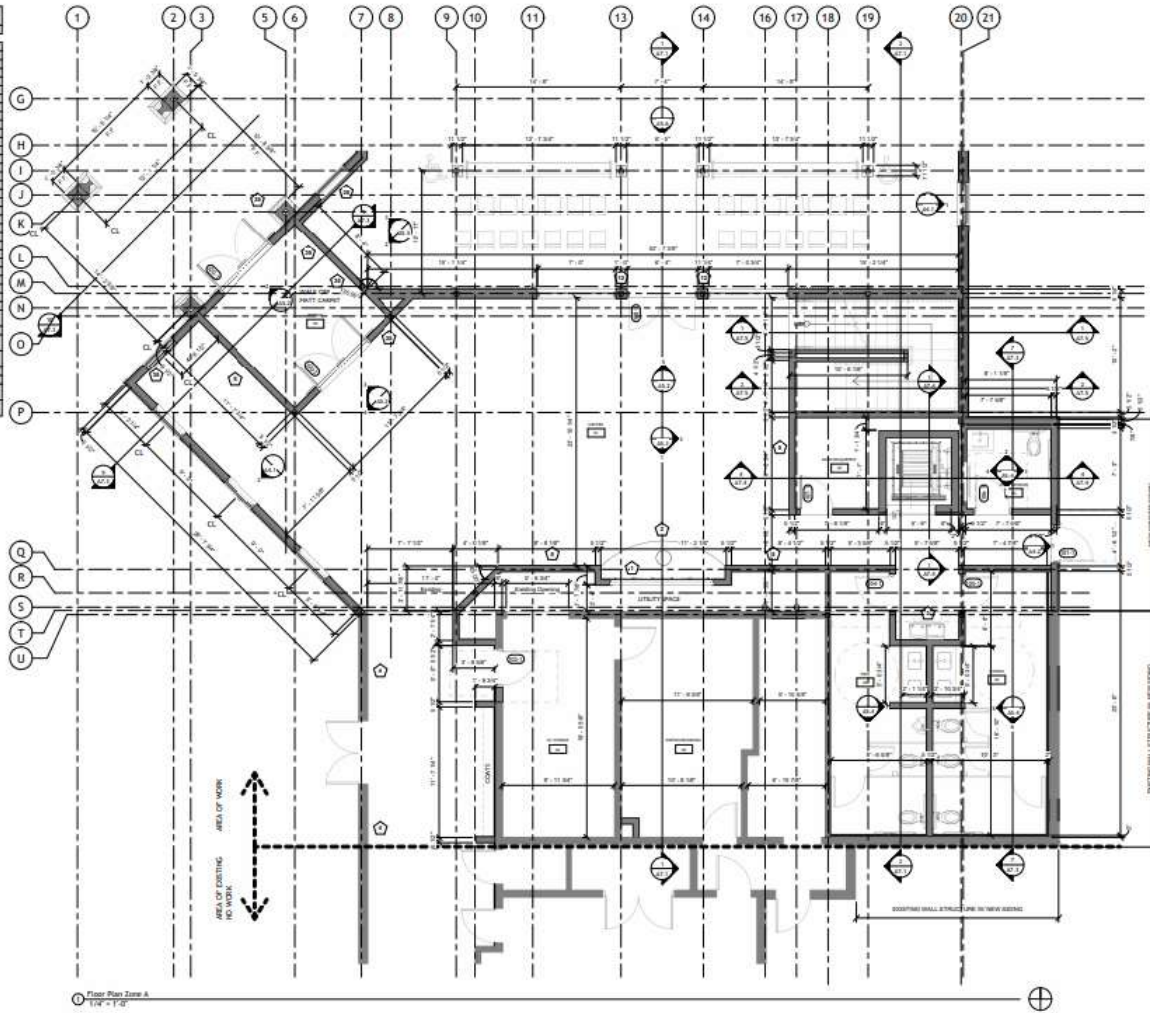
A3.0

DATE PLOTTED: 05/20/24 10:30 AM
SCALE: 1/8" = 1'-0"

COMPOSITE FLOOR PLAN
1/8" = 1'-0"

Architect Review

Number	Description
1	REVISIONS
2	REVISIONS
3	REVISIONS
4	REVISIONS
5	REVISIONS
6	REVISIONS
7	REVISIONS
8	REVISIONS
9	REVISIONS
10	REVISIONS
11	REVISIONS
12	REVISIONS
13	REVISIONS
14	REVISIONS
15	REVISIONS
16	REVISIONS
17	REVISIONS
18	REVISIONS
19	REVISIONS
20	REVISIONS
21	REVISIONS
22	REVISIONS
23	REVISIONS
24	REVISIONS
25	REVISIONS
26	REVISIONS
27	REVISIONS
28	REVISIONS
29	REVISIONS
30	REVISIONS
31	REVISIONS
32	REVISIONS
33	REVISIONS
34	REVISIONS
35	REVISIONS
36	REVISIONS
37	REVISIONS
38	REVISIONS
39	REVISIONS
40	REVISIONS
41	REVISIONS
42	REVISIONS
43	REVISIONS
44	REVISIONS
45	REVISIONS
46	REVISIONS
47	REVISIONS
48	REVISIONS
49	REVISIONS
50	REVISIONS
51	REVISIONS
52	REVISIONS
53	REVISIONS
54	REVISIONS
55	REVISIONS
56	REVISIONS
57	REVISIONS
58	REVISIONS
59	REVISIONS
60	REVISIONS
61	REVISIONS
62	REVISIONS
63	REVISIONS
64	REVISIONS
65	REVISIONS
66	REVISIONS
67	REVISIONS
68	REVISIONS
69	REVISIONS
70	REVISIONS
71	REVISIONS
72	REVISIONS
73	REVISIONS
74	REVISIONS
75	REVISIONS
76	REVISIONS
77	REVISIONS
78	REVISIONS
79	REVISIONS
80	REVISIONS
81	REVISIONS
82	REVISIONS
83	REVISIONS
84	REVISIONS
85	REVISIONS
86	REVISIONS
87	REVISIONS
88	REVISIONS
89	REVISIONS
90	REVISIONS
91	REVISIONS
92	REVISIONS
93	REVISIONS
94	REVISIONS
95	REVISIONS
96	REVISIONS
97	REVISIONS
98	REVISIONS
99	REVISIONS
100	REVISIONS



ISSUES	ISSUE DATE
Construction Documents	3-5-20



Sacred Heart Elk Rapids
 Project Number:
 24-19
 143 Charles Street,
 Elk Rapids, MI 49629

environmentalarchitects

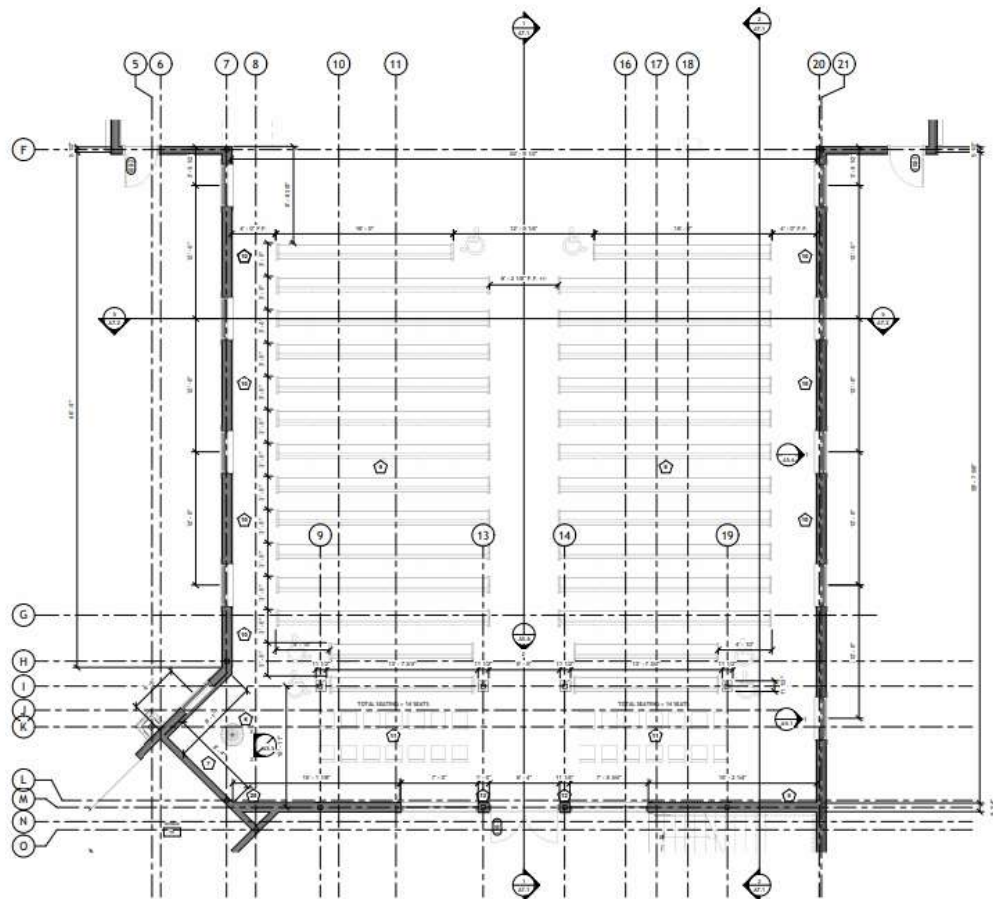
FLOOR PLAN -
 ZONE PLAN A

CALL 226.796.1234
 2201 E. Cherry Road NE
 FAIRMONT CITY, MI 49624
 ENVARCH.COM A3.1

3/15/2024 4:33:36 PM
 CALLED/ISSUED

Architect Review

PLAN NOTES	
Number	Note
1	ALL CASES MUST BE WITH WINDOW
2	CHECK HEAD OF CASE FINISH
3	ALL WINDOWS MUST HAVE VERTICAL CLEARANCE
4	DOOR AND WINDOW HEADS MUST BE FINISHED
5	DOOR AND WINDOW HEADS MUST BE FINISHED
6	DOOR AND WINDOW HEADS MUST BE FINISHED
7	DOOR AND WINDOW HEADS MUST BE FINISHED
8	DOOR AND WINDOW HEADS MUST BE FINISHED
9	DOOR AND WINDOW HEADS MUST BE FINISHED
10	DOOR AND WINDOW HEADS MUST BE FINISHED
11	DOOR AND WINDOW HEADS MUST BE FINISHED
12	DOOR AND WINDOW HEADS MUST BE FINISHED
13	DOOR AND WINDOW HEADS MUST BE FINISHED
14	DOOR AND WINDOW HEADS MUST BE FINISHED
15	DOOR AND WINDOW HEADS MUST BE FINISHED
16	DOOR AND WINDOW HEADS MUST BE FINISHED
17	DOOR AND WINDOW HEADS MUST BE FINISHED
18	DOOR AND WINDOW HEADS MUST BE FINISHED
19	DOOR AND WINDOW HEADS MUST BE FINISHED
20	DOOR AND WINDOW HEADS MUST BE FINISHED
21	DOOR AND WINDOW HEADS MUST BE FINISHED
22	DOOR AND WINDOW HEADS MUST BE FINISHED
23	DOOR AND WINDOW HEADS MUST BE FINISHED
24	DOOR AND WINDOW HEADS MUST BE FINISHED
25	DOOR AND WINDOW HEADS MUST BE FINISHED
26	DOOR AND WINDOW HEADS MUST BE FINISHED
27	DOOR AND WINDOW HEADS MUST BE FINISHED
28	DOOR AND WINDOW HEADS MUST BE FINISHED
29	DOOR AND WINDOW HEADS MUST BE FINISHED
30	DOOR AND WINDOW HEADS MUST BE FINISHED
31	DOOR AND WINDOW HEADS MUST BE FINISHED
32	DOOR AND WINDOW HEADS MUST BE FINISHED
33	DOOR AND WINDOW HEADS MUST BE FINISHED
34	DOOR AND WINDOW HEADS MUST BE FINISHED
35	DOOR AND WINDOW HEADS MUST BE FINISHED
36	DOOR AND WINDOW HEADS MUST BE FINISHED
37	DOOR AND WINDOW HEADS MUST BE FINISHED
38	DOOR AND WINDOW HEADS MUST BE FINISHED
39	DOOR AND WINDOW HEADS MUST BE FINISHED
40	DOOR AND WINDOW HEADS MUST BE FINISHED
41	DOOR AND WINDOW HEADS MUST BE FINISHED
42	DOOR AND WINDOW HEADS MUST BE FINISHED
43	DOOR AND WINDOW HEADS MUST BE FINISHED
44	DOOR AND WINDOW HEADS MUST BE FINISHED
45	DOOR AND WINDOW HEADS MUST BE FINISHED
46	DOOR AND WINDOW HEADS MUST BE FINISHED
47	DOOR AND WINDOW HEADS MUST BE FINISHED
48	DOOR AND WINDOW HEADS MUST BE FINISHED
49	DOOR AND WINDOW HEADS MUST BE FINISHED
50	DOOR AND WINDOW HEADS MUST BE FINISHED



Floor Plan Zone B
1/4" = 1'-0"

ISSUES	ISSUE DATE
Construction Documents	5-5-20



Sacred Heart Elk Rapids
Project Number: 24-19
143 Charles Street, Elk Rapids, MI 49629

environmentarchitects

FLOOR PLAN - ZONE PLAN B

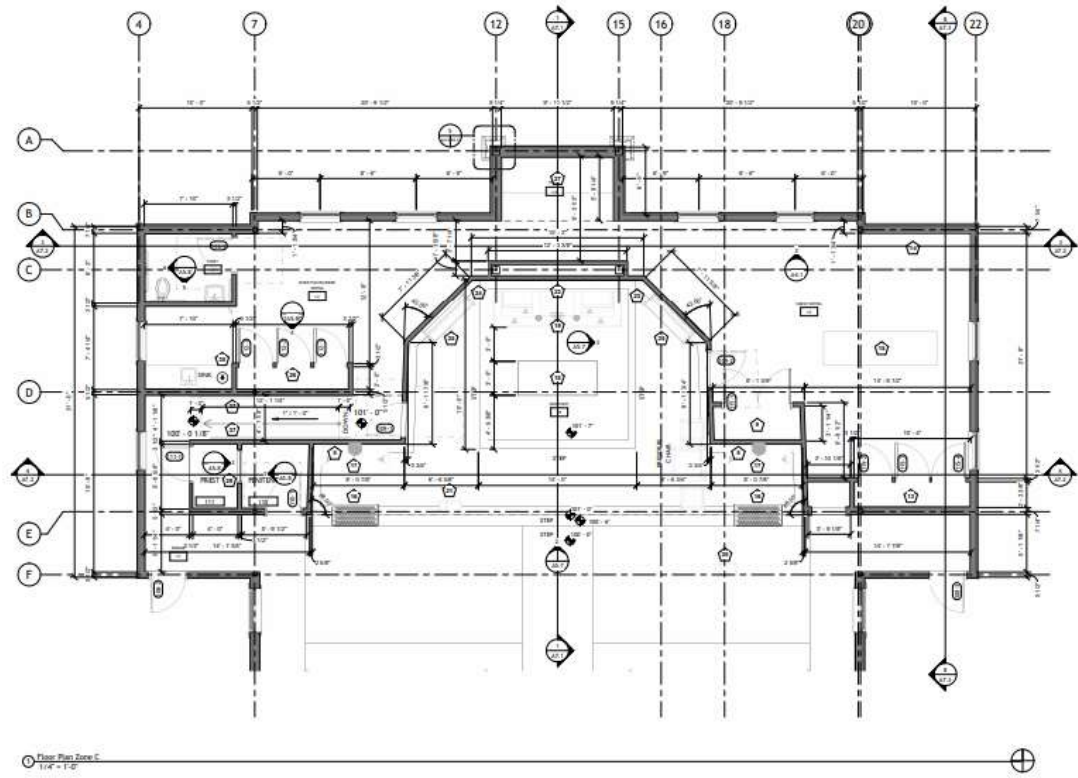
CALL: 226.966.1234
EMAIL: E.Design@enva.com
TRANSMISSION: 226.966.4544
WWW: ENVARCH.COM

A3.2

DATE PLOTTED: 5/13/2020 10:58:11 AM

Architect Review

PLAN NOTES	
Number	Description
1	RELOCATE EXISTING REAR WINDOW
2	RELOCATE EXISTING REAR WINDOW
3	ADD EXISTING EXTERIOR WALL WITH DOUBLE GLAZED
4	REMOVE EXISTING WINDOW
5	REMOVE EXISTING WINDOW
6	REMOVE EXISTING WINDOW
7	REMOVE EXISTING WINDOW
8	REMOVE EXISTING WINDOW
9	REMOVE EXISTING WINDOW
10	REMOVE EXISTING WINDOW
11	REMOVE EXISTING WINDOW
12	REMOVE EXISTING WINDOW
13	REMOVE EXISTING WINDOW
14	REMOVE EXISTING WINDOW
15	REMOVE EXISTING WINDOW
16	REMOVE EXISTING WINDOW
17	REMOVE EXISTING WINDOW
18	REMOVE EXISTING WINDOW
19	REMOVE EXISTING WINDOW
20	REMOVE EXISTING WINDOW
21	REMOVE EXISTING WINDOW
22	REMOVE EXISTING WINDOW
23	REMOVE EXISTING WINDOW
24	REMOVE EXISTING WINDOW
25	REMOVE EXISTING WINDOW
26	REMOVE EXISTING WINDOW
27	REMOVE EXISTING WINDOW
28	REMOVE EXISTING WINDOW
29	REMOVE EXISTING WINDOW
30	REMOVE EXISTING WINDOW
31	REMOVE EXISTING WINDOW
32	REMOVE EXISTING WINDOW
33	REMOVE EXISTING WINDOW
34	REMOVE EXISTING WINDOW
35	REMOVE EXISTING WINDOW
36	REMOVE EXISTING WINDOW
37	REMOVE EXISTING WINDOW
38	REMOVE EXISTING WINDOW
39	REMOVE EXISTING WINDOW
40	REMOVE EXISTING WINDOW
41	REMOVE EXISTING WINDOW
42	REMOVE EXISTING WINDOW
43	REMOVE EXISTING WINDOW
44	REMOVE EXISTING WINDOW
45	REMOVE EXISTING WINDOW
46	REMOVE EXISTING WINDOW
47	REMOVE EXISTING WINDOW
48	REMOVE EXISTING WINDOW
49	REMOVE EXISTING WINDOW
50	REMOVE EXISTING WINDOW
51	REMOVE EXISTING WINDOW
52	REMOVE EXISTING WINDOW
53	REMOVE EXISTING WINDOW
54	REMOVE EXISTING WINDOW
55	REMOVE EXISTING WINDOW
56	REMOVE EXISTING WINDOW
57	REMOVE EXISTING WINDOW
58	REMOVE EXISTING WINDOW
59	REMOVE EXISTING WINDOW
60	REMOVE EXISTING WINDOW
61	REMOVE EXISTING WINDOW
62	REMOVE EXISTING WINDOW
63	REMOVE EXISTING WINDOW
64	REMOVE EXISTING WINDOW
65	REMOVE EXISTING WINDOW
66	REMOVE EXISTING WINDOW
67	REMOVE EXISTING WINDOW
68	REMOVE EXISTING WINDOW
69	REMOVE EXISTING WINDOW
70	REMOVE EXISTING WINDOW
71	REMOVE EXISTING WINDOW
72	REMOVE EXISTING WINDOW
73	REMOVE EXISTING WINDOW
74	REMOVE EXISTING WINDOW
75	REMOVE EXISTING WINDOW
76	REMOVE EXISTING WINDOW
77	REMOVE EXISTING WINDOW
78	REMOVE EXISTING WINDOW
79	REMOVE EXISTING WINDOW
80	REMOVE EXISTING WINDOW
81	REMOVE EXISTING WINDOW
82	REMOVE EXISTING WINDOW
83	REMOVE EXISTING WINDOW
84	REMOVE EXISTING WINDOW
85	REMOVE EXISTING WINDOW
86	REMOVE EXISTING WINDOW
87	REMOVE EXISTING WINDOW
88	REMOVE EXISTING WINDOW
89	REMOVE EXISTING WINDOW
90	REMOVE EXISTING WINDOW
91	REMOVE EXISTING WINDOW
92	REMOVE EXISTING WINDOW
93	REMOVE EXISTING WINDOW
94	REMOVE EXISTING WINDOW
95	REMOVE EXISTING WINDOW
96	REMOVE EXISTING WINDOW
97	REMOVE EXISTING WINDOW
98	REMOVE EXISTING WINDOW
99	REMOVE EXISTING WINDOW
100	REMOVE EXISTING WINDOW



○ Floor Plan Zone C
1/4" = 1'-0"

ISSUES ISSUE DATE
Construction Documents 2-5-20



DATE PLOTTED: 2/20/2024 10:42 AM

environmentalarchitects

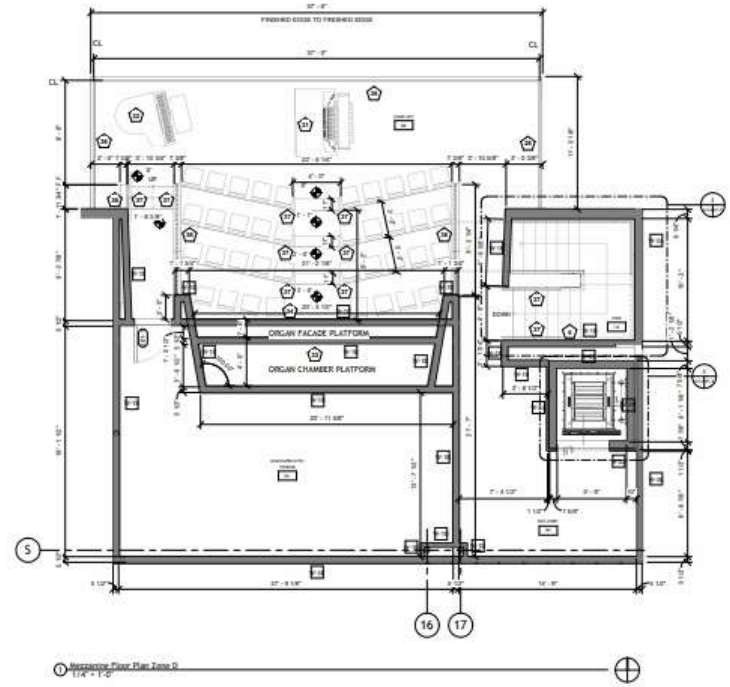
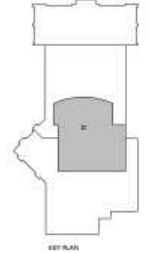
Sacred Heart Elk Rapids
Project Number:
24-19
143 Charles Street,
Elk Rapids, MI 49629

FLOOR PLAN - ZONE PLAN C	A3.3
<small> CAD: J. J. M. / J. J. M. DATE: 2/20/2024 10:42 AM THERESA CITY PL 49629 ENV.AEARCH.COM </small>	

Architect Review

PLAN NOTES	
Number	Text
1	RELOCATE EXISTING SIDE WINDOW
2	REMOVE REAR OF EXIST. DOOR
3	ADD ORNAMENTAL PILLARS WITH BUTTELE PILLAR
4	REMOVE MECHANICAL ELEMENT
5	APPLYWORK - FLOORFLOOR
6	APPLYWORK - WALL
7	REMOVE REAR WALL
8	REMOVE REAR WALL - EXISTING MECHANICAL SYSTEM
9	REMOVE REAR WALL
10	REMOVE REAR WALL
11	REMOVE REAR WALL
12	REMOVE REAR WALL
13	REMOVE REAR WALL
14	REMOVE REAR WALL
15	REMOVE REAR WALL
16	REMOVE REAR WALL
17	REMOVE REAR WALL
18	REMOVE REAR WALL
19	REMOVE REAR WALL
20	REMOVE REAR WALL
21	REMOVE REAR WALL
22	REMOVE REAR WALL
23	REMOVE REAR WALL
24	REMOVE REAR WALL
25	REMOVE REAR WALL
26	REMOVE REAR WALL
27	REMOVE REAR WALL
28	REMOVE REAR WALL
29	REMOVE REAR WALL
30	REMOVE REAR WALL
31	REMOVE REAR WALL
32	REMOVE REAR WALL
33	REMOVE REAR WALL
34	REMOVE REAR WALL
35	REMOVE REAR WALL
36	REMOVE REAR WALL
37	REMOVE REAR WALL
38	REMOVE REAR WALL
39	REMOVE REAR WALL
40	REMOVE REAR WALL
41	REMOVE REAR WALL
42	REMOVE REAR WALL
43	REMOVE REAR WALL
44	REMOVE REAR WALL
45	REMOVE REAR WALL
46	REMOVE REAR WALL
47	REMOVE REAR WALL
48	REMOVE REAR WALL
49	REMOVE REAR WALL
50	REMOVE REAR WALL
51	REMOVE REAR WALL
52	REMOVE REAR WALL
53	REMOVE REAR WALL
54	REMOVE REAR WALL
55	REMOVE REAR WALL
56	REMOVE REAR WALL
57	REMOVE REAR WALL
58	REMOVE REAR WALL
59	REMOVE REAR WALL
60	REMOVE REAR WALL
61	REMOVE REAR WALL
62	REMOVE REAR WALL
63	REMOVE REAR WALL
64	REMOVE REAR WALL
65	REMOVE REAR WALL
66	REMOVE REAR WALL
67	REMOVE REAR WALL
68	REMOVE REAR WALL
69	REMOVE REAR WALL
70	REMOVE REAR WALL
71	REMOVE REAR WALL
72	REMOVE REAR WALL
73	REMOVE REAR WALL
74	REMOVE REAR WALL
75	REMOVE REAR WALL
76	REMOVE REAR WALL
77	REMOVE REAR WALL
78	REMOVE REAR WALL
79	REMOVE REAR WALL
80	REMOVE REAR WALL
81	REMOVE REAR WALL
82	REMOVE REAR WALL
83	REMOVE REAR WALL
84	REMOVE REAR WALL
85	REMOVE REAR WALL
86	REMOVE REAR WALL
87	REMOVE REAR WALL
88	REMOVE REAR WALL
89	REMOVE REAR WALL
90	REMOVE REAR WALL
91	REMOVE REAR WALL
92	REMOVE REAR WALL
93	REMOVE REAR WALL
94	REMOVE REAR WALL
95	REMOVE REAR WALL
96	REMOVE REAR WALL
97	REMOVE REAR WALL
98	REMOVE REAR WALL
99	REMOVE REAR WALL
100	REMOVE REAR WALL

ISSUES ISSUE DATE
Construction Documents 3-5-20



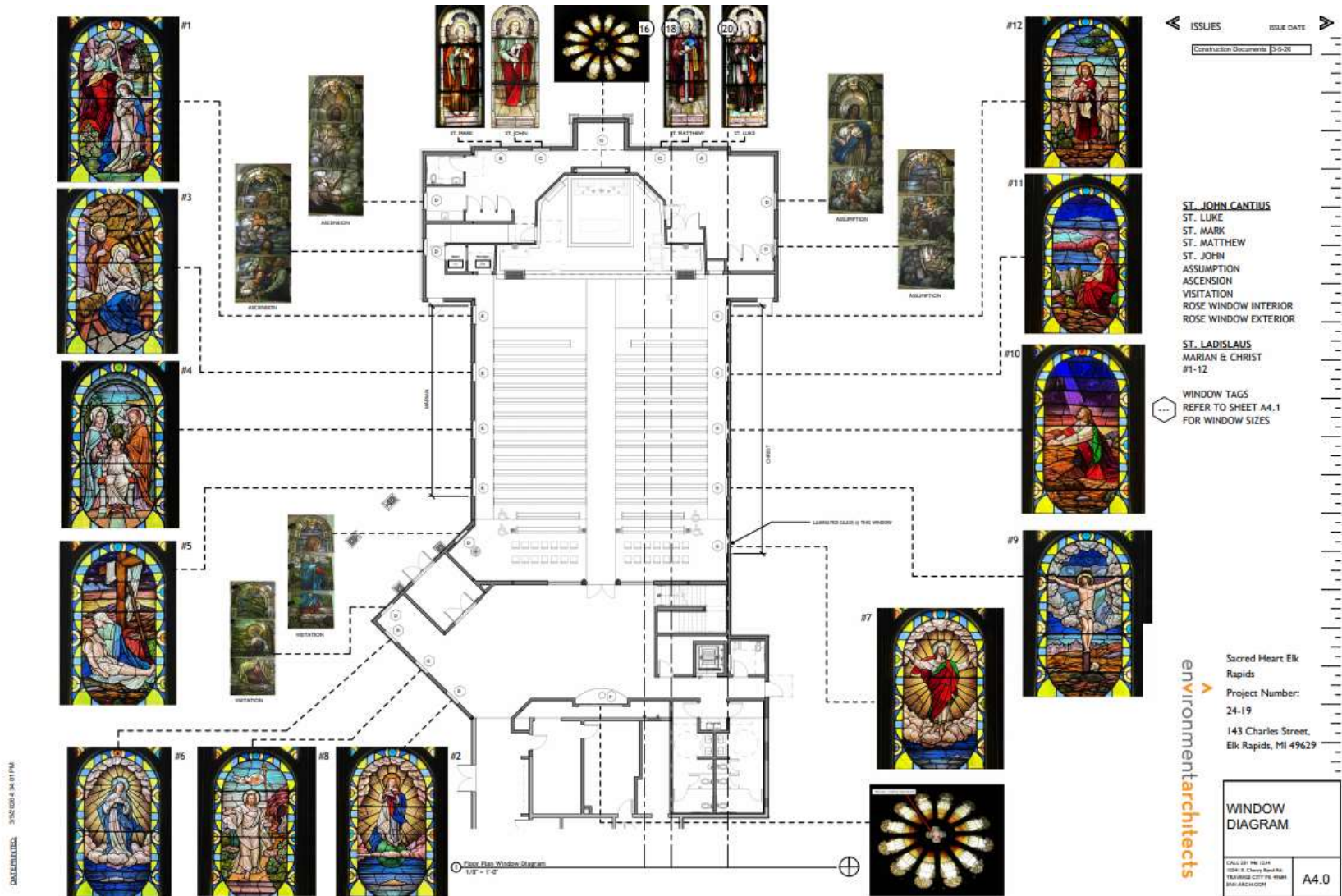
DATE PLOTTED: 3/5/2020 4:25:47 PM

Sacred Heart Elk Rapids
Project Number: 24-19
143 Charles Street, Elk Rapids, MI 49629

environmentalarchitects

FLOOR PLAN - ZONE PLAN D	
CALL TO US TODAY! 2841 S. Cherry Street TAYLOR CITY, MI 48884 800.444.4400	A3.4

Architect Review



Architect Review

Item	Material Type	Manufacturer	Color	Code	Note
INT-1	CONCRETE	CONCRETE	CONCRETE	CONC-1	
INT-2	CONCRETE	CONCRETE	CONCRETE	CONC-1	
INT-3	CONCRETE	CONCRETE	CONCRETE	CONC-1	
INT-4	CONCRETE	CONCRETE	CONCRETE	CONC-1	
INT-5	CONCRETE	CONCRETE	CONCRETE	CONC-1	
INT-6	CONCRETE	CONCRETE	CONCRETE	CONC-1	
INT-7	CONCRETE	CONCRETE	CONCRETE	CONC-1	
INT-8	CONCRETE	CONCRETE	CONCRETE	CONC-1	
INT-9	CONCRETE	CONCRETE	CONCRETE	CONC-1	
INT-10	CONCRETE	CONCRETE	CONCRETE	CONC-1	
INT-11	CONCRETE	CONCRETE	CONCRETE	CONC-1	
INT-12	CONCRETE	CONCRETE	CONCRETE	CONC-1	
INT-13	CONCRETE	CONCRETE	CONCRETE	CONC-1	
INT-14	CONCRETE	CONCRETE	CONCRETE	CONC-1	
INT-15	CONCRETE	CONCRETE	CONCRETE	CONC-1	
INT-16	CONCRETE	CONCRETE	CONCRETE	CONC-1	
INT-17	CONCRETE	CONCRETE	CONCRETE	CONC-1	
INT-18	CONCRETE	CONCRETE	CONCRETE	CONC-1	
INT-19	CONCRETE	CONCRETE	CONCRETE	CONC-1	
INT-20	CONCRETE	CONCRETE	CONCRETE	CONC-1	
INT-21	CONCRETE	CONCRETE	CONCRETE	CONC-1	
INT-22	CONCRETE	CONCRETE	CONCRETE	CONC-1	
INT-23	CONCRETE	CONCRETE	CONCRETE	CONC-1	
INT-24	CONCRETE	CONCRETE	CONCRETE	CONC-1	
INT-25	CONCRETE	CONCRETE	CONCRETE	CONC-1	
INT-26	CONCRETE	CONCRETE	CONCRETE	CONC-1	
INT-27	CONCRETE	CONCRETE	CONCRETE	CONC-1	
INT-28	CONCRETE	CONCRETE	CONCRETE	CONC-1	
INT-29	CONCRETE	CONCRETE	CONCRETE	CONC-1	
INT-30	CONCRETE	CONCRETE	CONCRETE	CONC-1	
INT-31	CONCRETE	CONCRETE	CONCRETE	CONC-1	
INT-32	CONCRETE	CONCRETE	CONCRETE	CONC-1	
INT-33	CONCRETE	CONCRETE	CONCRETE	CONC-1	
INT-34	CONCRETE	CONCRETE	CONCRETE	CONC-1	
INT-35	CONCRETE	CONCRETE	CONCRETE	CONC-1	
INT-36	CONCRETE	CONCRETE	CONCRETE	CONC-1	
INT-37	CONCRETE	CONCRETE	CONCRETE	CONC-1	
INT-38	CONCRETE	CONCRETE	CONCRETE	CONC-1	
INT-39	CONCRETE	CONCRETE	CONCRETE	CONC-1	
INT-40	CONCRETE	CONCRETE	CONCRETE	CONC-1	
INT-41	CONCRETE	CONCRETE	CONCRETE	CONC-1	
INT-42	CONCRETE	CONCRETE	CONCRETE	CONC-1	
INT-43	CONCRETE	CONCRETE	CONCRETE	CONC-1	
INT-44	CONCRETE	CONCRETE	CONCRETE	CONC-1	
INT-45	CONCRETE	CONCRETE	CONCRETE	CONC-1	
INT-46	CONCRETE	CONCRETE	CONCRETE	CONC-1	
INT-47	CONCRETE	CONCRETE	CONCRETE	CONC-1	
INT-48	CONCRETE	CONCRETE	CONCRETE	CONC-1	
INT-49	CONCRETE	CONCRETE	CONCRETE	CONC-1	
INT-50	CONCRETE	CONCRETE	CONCRETE	CONC-1	

Room Number	Room Name	Floor	Area	Code	Material	Color	Quantity	Unit	Notes
100	RECEIVING	INT-1	100	INT-1	CONC-1	CONC-1	100	SQ FT	
101	RECEIVING	INT-1	100	INT-1	CONC-1	CONC-1	100	SQ FT	
102	RECEIVING	INT-1	100	INT-1	CONC-1	CONC-1	100	SQ FT	
103	RECEIVING	INT-1	100	INT-1	CONC-1	CONC-1	100	SQ FT	
104	RECEIVING	INT-1	100	INT-1	CONC-1	CONC-1	100	SQ FT	
105	RECEIVING	INT-1	100	INT-1	CONC-1	CONC-1	100	SQ FT	
106	RECEIVING	INT-1	100	INT-1	CONC-1	CONC-1	100	SQ FT	
107	RECEIVING	INT-1	100	INT-1	CONC-1	CONC-1	100	SQ FT	
108	RECEIVING	INT-1	100	INT-1	CONC-1	CONC-1	100	SQ FT	
109	RECEIVING	INT-1	100	INT-1	CONC-1	CONC-1	100	SQ FT	
110	RECEIVING	INT-1	100	INT-1	CONC-1	CONC-1	100	SQ FT	
111	RECEIVING	INT-1	100	INT-1	CONC-1	CONC-1	100	SQ FT	
112	RECEIVING	INT-1	100	INT-1	CONC-1	CONC-1	100	SQ FT	
113	RECEIVING	INT-1	100	INT-1	CONC-1	CONC-1	100	SQ FT	
114	RECEIVING	INT-1	100	INT-1	CONC-1	CONC-1	100	SQ FT	
115	RECEIVING	INT-1	100	INT-1	CONC-1	CONC-1	100	SQ FT	
116	RECEIVING	INT-1	100	INT-1	CONC-1	CONC-1	100	SQ FT	
117	RECEIVING	INT-1	100	INT-1	CONC-1	CONC-1	100	SQ FT	
118	RECEIVING	INT-1	100	INT-1	CONC-1	CONC-1	100	SQ FT	
119	RECEIVING	INT-1	100	INT-1	CONC-1	CONC-1	100	SQ FT	
120	RECEIVING	INT-1	100	INT-1	CONC-1	CONC-1	100	SQ FT	
121	RECEIVING	INT-1	100	INT-1	CONC-1	CONC-1	100	SQ FT	
122	RECEIVING	INT-1	100	INT-1	CONC-1	CONC-1	100	SQ FT	
123	RECEIVING	INT-1	100	INT-1	CONC-1	CONC-1	100	SQ FT	
124	RECEIVING	INT-1	100	INT-1	CONC-1	CONC-1	100	SQ FT	
125	RECEIVING	INT-1	100	INT-1	CONC-1	CONC-1	100	SQ FT	
126	RECEIVING	INT-1	100	INT-1	CONC-1	CONC-1	100	SQ FT	
127	RECEIVING	INT-1	100	INT-1	CONC-1	CONC-1	100	SQ FT	
128	RECEIVING	INT-1	100	INT-1	CONC-1	CONC-1	100	SQ FT	
129	RECEIVING	INT-1	100	INT-1	CONC-1	CONC-1	100	SQ FT	
130	RECEIVING	INT-1	100	INT-1	CONC-1	CONC-1	100	SQ FT	
131	RECEIVING	INT-1	100	INT-1	CONC-1	CONC-1	100	SQ FT	
132	RECEIVING	INT-1	100	INT-1	CONC-1	CONC-1	100	SQ FT	
133	RECEIVING	INT-1	100	INT-1	CONC-1	CONC-1	100	SQ FT	
134	RECEIVING	INT-1	100	INT-1	CONC-1	CONC-1	100	SQ FT	
135	RECEIVING	INT-1	100	INT-1	CONC-1	CONC-1	100	SQ FT	
136	RECEIVING	INT-1	100	INT-1	CONC-1	CONC-1	100	SQ FT	
137	RECEIVING	INT-1	100	INT-1	CONC-1	CONC-1	100	SQ FT	
138	RECEIVING	INT-1	100	INT-1	CONC-1	CONC-1	100	SQ FT	
139	RECEIVING	INT-1	100	INT-1	CONC-1	CONC-1	100	SQ FT	
140	RECEIVING	INT-1	100	INT-1	CONC-1	CONC-1	100	SQ FT	
141	RECEIVING	INT-1	100	INT-1	CONC-1	CONC-1	100	SQ FT	
142	RECEIVING	INT-1	100	INT-1	CONC-1	CONC-1	100	SQ FT	
143	RECEIVING	INT-1	100	INT-1	CONC-1	CONC-1	100	SQ FT	
144	RECEIVING	INT-1	100	INT-1	CONC-1	CONC-1	100	SQ FT	
145	RECEIVING	INT-1	100	INT-1	CONC-1	CONC-1	100	SQ FT	
146	RECEIVING	INT-1	100	INT-1	CONC-1	CONC-1	100	SQ FT	
147	RECEIVING	INT-1	100	INT-1	CONC-1	CONC-1	100	SQ FT	
148	RECEIVING	INT-1	100	INT-1	CONC-1	CONC-1	100	SQ FT	
149	RECEIVING	INT-1	100	INT-1	CONC-1	CONC-1	100	SQ FT	
150	RECEIVING	INT-1	100	INT-1	CONC-1	CONC-1	100	SQ FT	

- Finish Legend
- CONC-1
 - CPT-1
 - RBR-1
 - RBR-1, WFL-2
 - T-1, T-2, T-3, T-4
 - T-2
 - WFL-1
 - WFL-1, WFL-2
 - WFL-2
 - T-6
 - WD-4



ISSUES
Construction Documents 13-20



environmentalarchitects

Sacred Heart Elk Rapids
Project Number:
24-19
143 Charles Street,
Elk Rapids, MI
49629

FINISH FLOOR
PLAN +
SCHEDULE

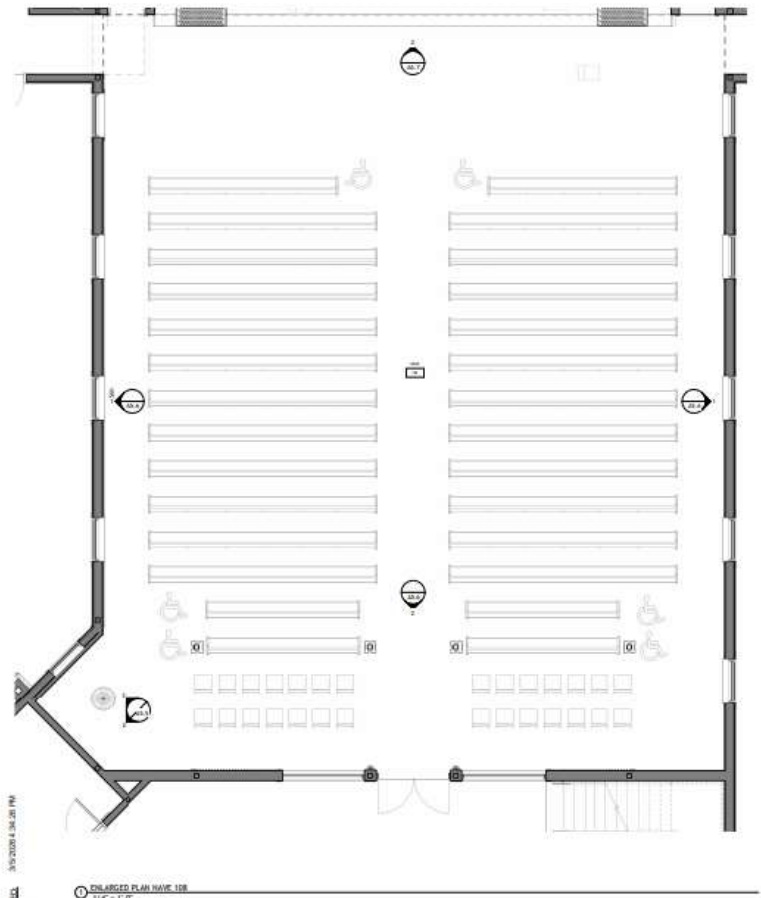
CALL 227.996.0328
2221 E. Cherry Street SE
TRAVERSE CITY MI 49606
WWW.AMCA.COM

A5.1

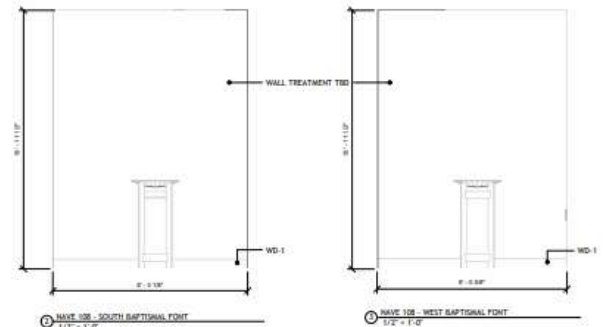
DATE: 03/20/2019 10:14 AM

Architect Review

ISSUES ISSUE DATE
 Construction Documents 3-5-20



PRESEBYTERY - NAVE - MEZZANINE
 1/16" = 1'-0"



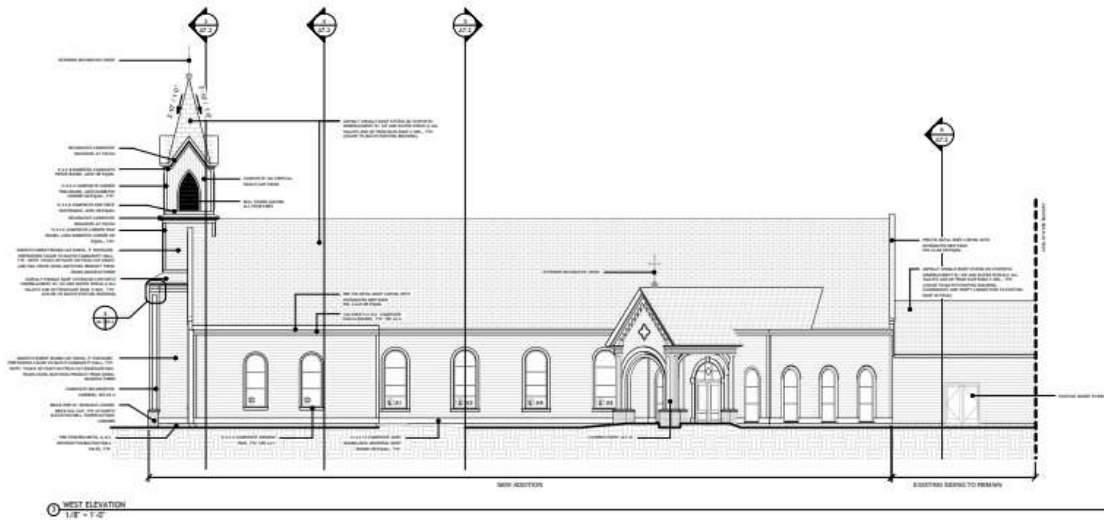
environmentarchitects

Sacred Heart Elk Rapids
 Project Number:
 24-19
 143 Charles Street,
 Elk Rapids, MI 49629

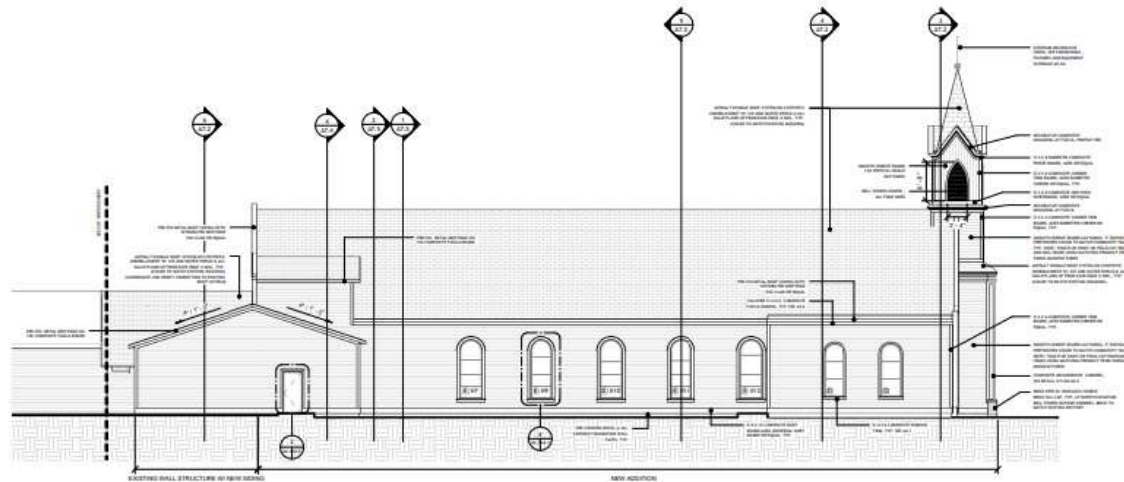
INTERIOR ELEVATIONS	
CALL: 231.946.1234 1204 S. Cherry Street TRAVERS CITY, MI 49458 ENV-ARCH.COM	A5.5

3/5/2020 4:26:28 PM
 DWG: 24-19-010-010
 24-19-010-010

Architect Review



1 WEST ELEVATION
1/8" = 1'-0"



2 East Elevation
1/8" = 1'-0"

ISSUES ISSUE DATE

Construction Documents 3-3-25

Sacred Heart Elk Rapids
Project Number:
24-19
143 Charles Street,
Elk Rapids, MI 49629

environmentarchitects

EXTERIOR
ELEVATIONS

CALL US: 781.124.
2200 Elmore Street
TAVENHUR CITY IN HIGH
DESIGN ARCHITECTURE

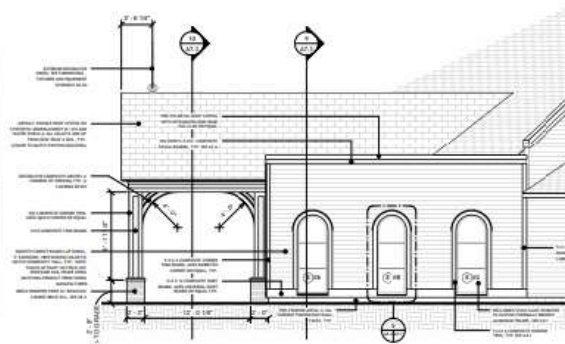
A6.1

Architect Review

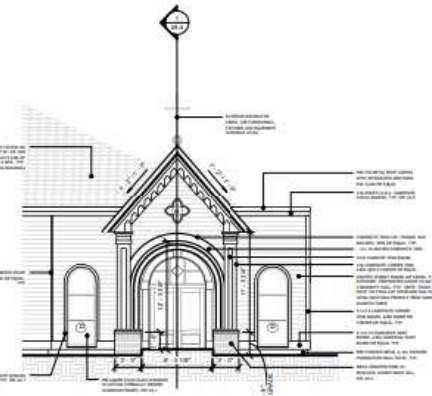
ISSUES ISSUE DATE
 Construction Documents 1-2-20



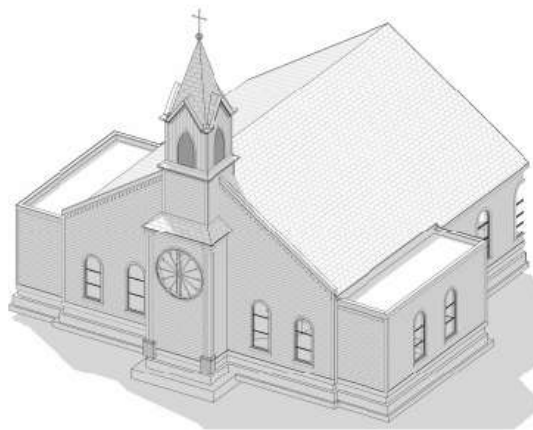
EXTERIOR COVERED ENTRY
 3/16" = 1'-0"



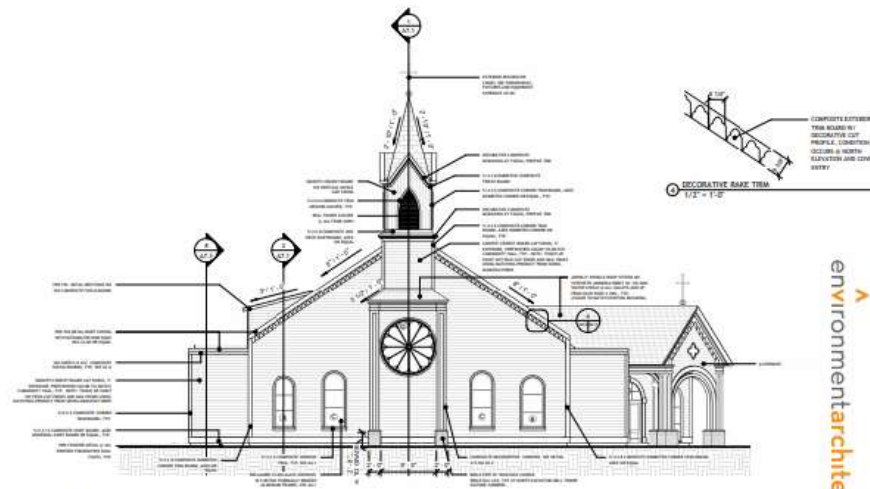
South West Entry Elevation
 3/16" = 1'-0"



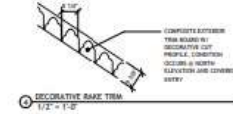
North West Entry Elevation
 3/16" = 1'-0"



SANCTUARY EXTERIOR ARCH
 3/16" = 1'-0"



NORTH ELEVATION
 1/8" = 1'-0"



DECORATIVE RAKE TRIM
 1/2" = 1'-0"

3/15/2020 4:36:24 PM
 UNRECORDED

environmentalarchitects

Sacred Heart Elk
 Rapids
 Project Number:
 24-19
 143 Charles Street,
 Elk Rapids, MI 49629

EXTERIOR ELEVATIONS

CALL: 231.746.1234
 1000 E. Cherry Street, N.E.
 TROY, MI 48063
 WWW.ENVARCH.COM

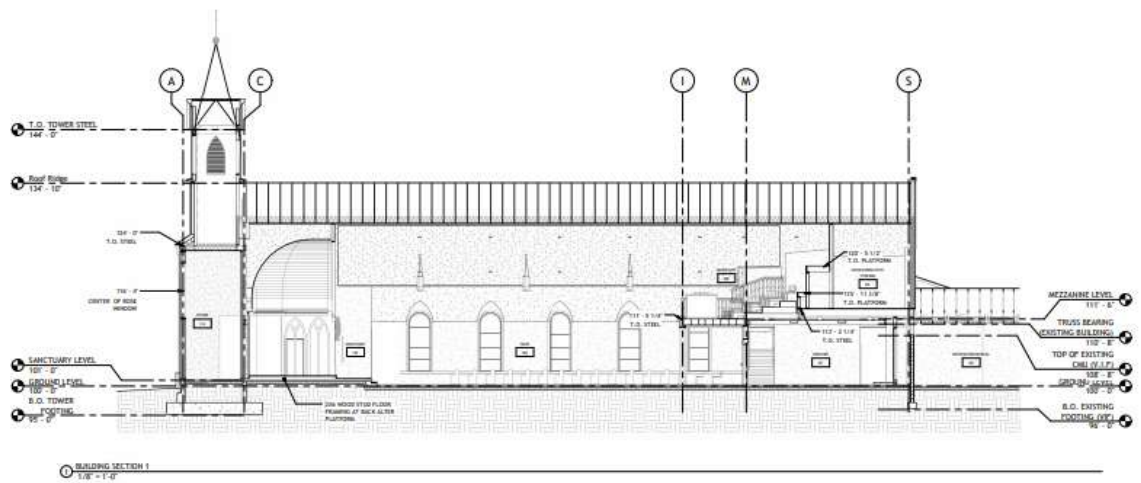
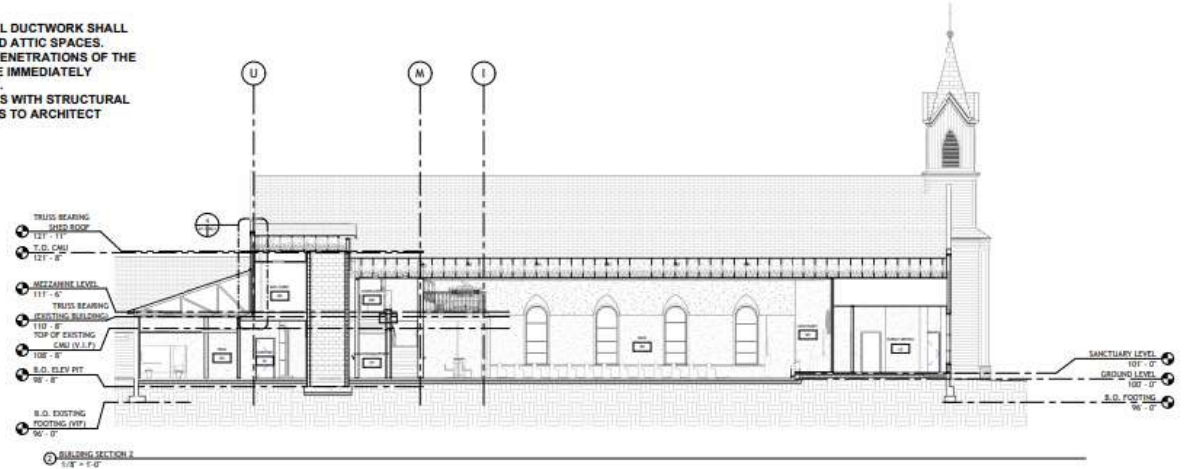
A6.2

Architect Review

NOTE:
 - ABSOLUTELY NO MECHANICAL DUCTWORK SHALL BE PERMITTED IN UNINSULATED ATTIC SPACES.
 - ANY CONDITIONS REQUIRING PENETRATIONS OF THE THERMAL ENVELOPE SHALL BE IMMEDIATELY REPORTED TO THE ARCHITECT.
 - COORDINATE ALL ELEVATIONS WITH STRUCTURAL AND REPORT INCONSISTANCIES TO ARCHITECT

ISSUES ISSUE DATE

Construction Documents 3-5-20



DATE PLOTTED: 3/5/2020 6:53:30 PM

environmentalarchitects

Sacred Heart Elk Rapids
 Project Number: 24-19
 143 Charles Street, Elk Rapids, MI 49629

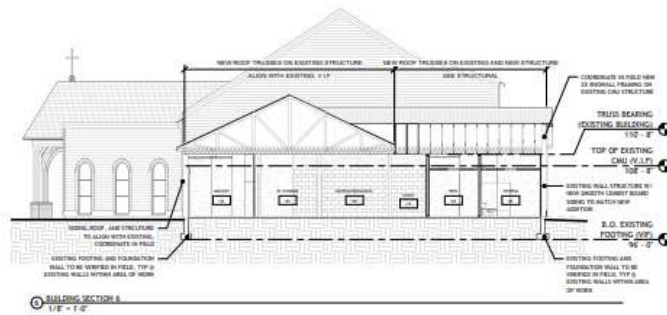
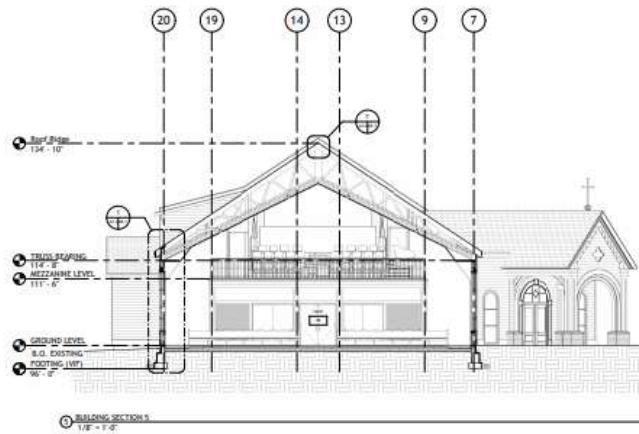
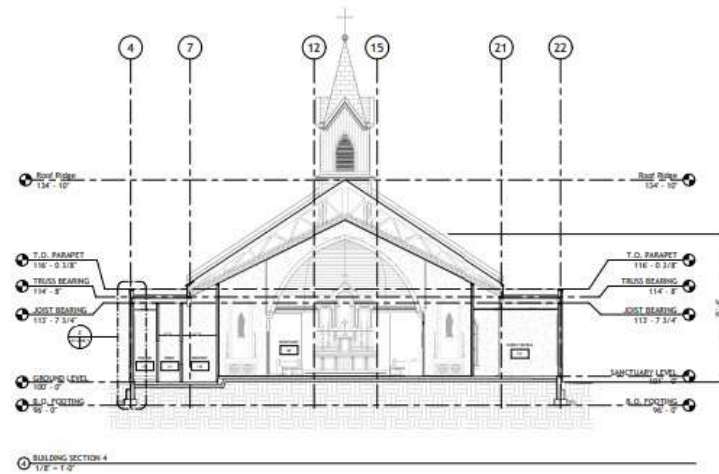
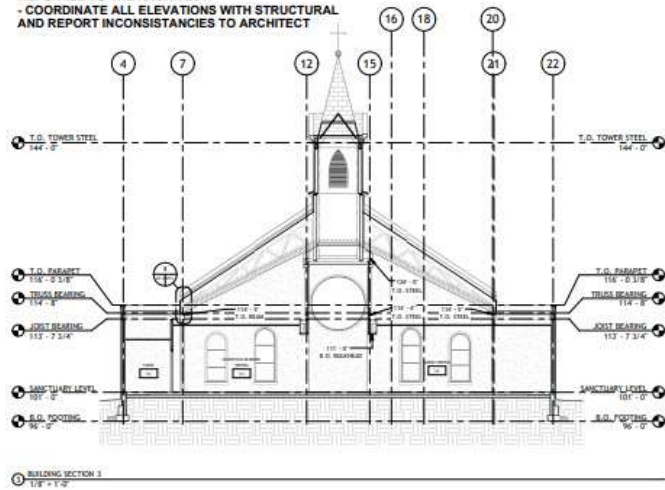
BUILDING SECTIONS	
CALL 201.766.1224 1041 S. Cherry Street Riverside, CT 06458 WWW.ENVARCH.COM	A7.1

Architect Review

NOTE:
 - ABSOLUTELY NO MECHANICAL DUCTWORK SHALL BE PERMITTED IN UNINSULATED ATTIC SPACES.
 ANY CONDITIONS REQUIRING PENETRATIONS OF THE THERMAL ENVELOPE SHALL BE IMMEDIATELY REPORTED TO THE ARCHITECT.
 - COORDINATE ALL ELEVATIONS WITH STRUCTURAL AND REPORT INCONSISTANCIES TO ARCHITECT

ISSUES ISSUE DATE

Correction Drawings 5-5-20



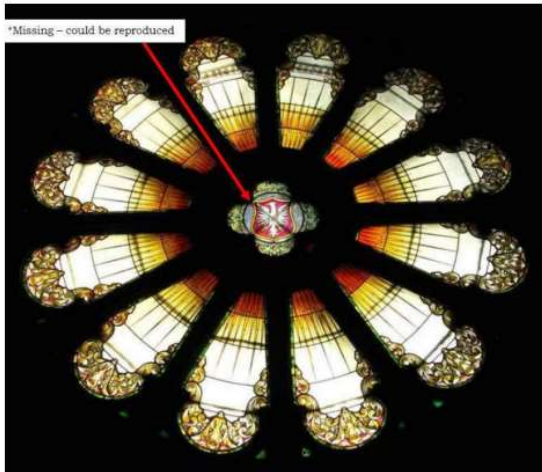
DATE PLOTTED: 3/20/2020 4:48:50 PM

environmentalarchitects

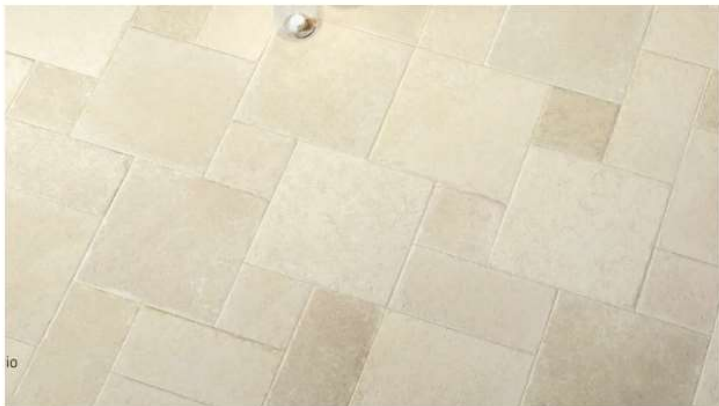
Sacred Heart Elk Rapids
 Project Number: 24-19
 143 Charles Street,
 Elk Rapids, MI 49629

BUILDING SECTIONS	
CALL 261.796.1234 800.615.2244 TAYLORVILLE CITY 75.4944 ENV.ARCH.COM	A7.2

Interior Review



Rose Window



Tile Pattern + Color - 8x8, 8x16, 16x16, 24x24



Narthex



Paint Colors



Door + Trim
Wood Finish



Ceiling



Narthex



Interior Review



Paint Colors



Organ + Pew Finish



Combination of Light + Dark Wood Floor

Interior Review



environmentarchitects

Choir Loft



Paint Colors



Organ + Pew Finish



Rubber Flooring

Choir Loft

environmentarchitects

Conclusion

- **Breaking ground represents decades of preparation by many individuals in this faith community**
- **Thank you for sacrificially giving of yourselves through your time, talent, and treasure.**
- **There is still time to be a part of something great. If you know someone who would like to be involved, please connect them with a member of the Capital Campaign or Building Committees**

